



CRS Nepal Briefing Kit

OCTOBER 10–14, 2022



Nepal Welcome Letter

स्वागत छ!
Svāgata cha!
Welcome!



Welcome to Nepal!

Nepal's borders include eight of the 10 tallest mountains in the world. The tallest, Mt. Everest, stands 29,000 feet above sea level. These mountain areas attract tourists from across the globe—Nepal is considered a paradise for trekkers, hikers and outdoor sports enthusiasts. But, in contrast to its grandeur and landscape, the country is among the poorest in the world.

Ten years of conflict and ongoing political unrest have cost many Nepalese lives and battered the Himalayan country's already weak economy. In addition, each year Nepal experiences multiple natural disasters—monsoon floods, landslides, fires and drought. And most parts of the country are seismically active, making them vulnerable to earthquakes. For this reason, Catholic Relief Services' work in Nepal focuses primarily on supporting Caritas Nepal in delivering emergency aid to families affected by these disasters.

Two massive earthquakes struck Nepal in April and May of 2015, leading to one of CRS' most significant relief efforts there. More than 8 million of Nepal's 28 million people were affected, with nearly 2.6 million people left in need of emergency shelter, water, food, medicine and reconstruction support. The government of Nepal declared a state of emergency and reported 8,891 deaths, with 605,254 houses destroyed and 288,244 damaged. Within hours of the earthquake, CRS released pre-positioned stocks of emergency shelter materials, blankets, and water and hygiene kits. Today, we continue to provide necessary relief and recovery support through our sister organization Caritas Nepal.

Moving forward, CRS is focused on supporting the Nepalese government's recovery and rehabilitation efforts for livelihoods, shelter, water, health, sanitation and hygiene through several programs in Nepal.

We look forward to introducing you to some of our country staff and program participants—and showing you the great work we're doing together!

Katie Price
Country Representative for CRS in Nepal

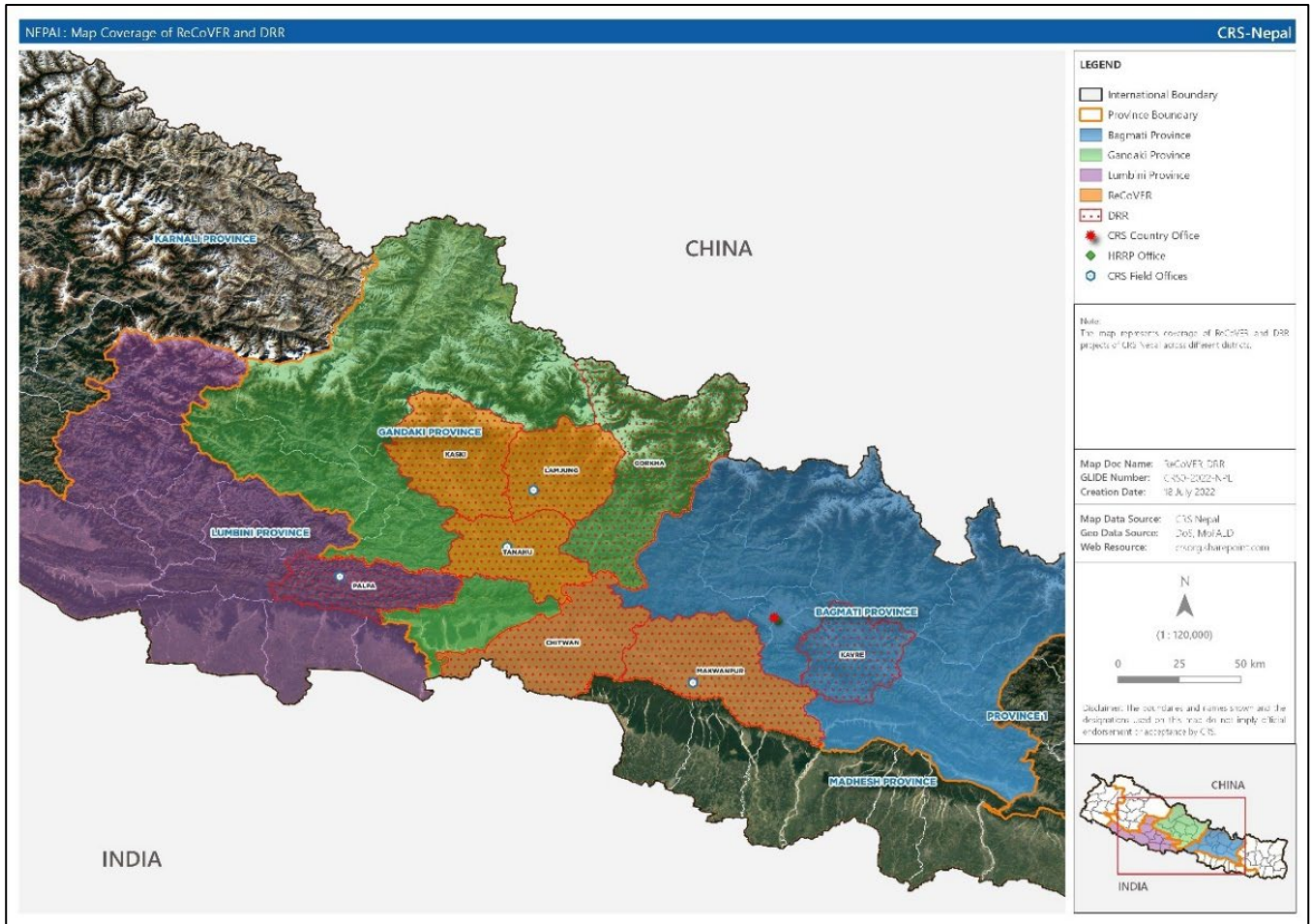


Contents

Nepal Welcome Letter	1
Travel Section	3
Map of ReCoVER Program and Locations to Visit	3
Emergency and Medical Contacts	3
Pre-Arrival Checklists	4
Airport Arrival.....	6
Arrival Package from CRS Nepal.....	6
Overview of Nepal	8
Country Information	8
Safety and Security	9
Dengue	10
Election.....	10
Cultural and Contextual Awareness	11
Overview of Nepal Country Program.....	12
Office Presence	12
Staff Numbers.....	12
Partners: NGO, Private, Research, and Government Partners	12
External Donors	12
Budget	12
CRS in Nepal	13
Staff Bios	13
CRS Success to date	14
Highlight of CRS in Nepal: Impact in Numbers.....	16
Map of Nepal 2015 Earthquake.....	16
Current Projects in Nepal	17
Visitor Profiles	20

Travel Section

Map of ReCoVER Program and Locations to Visit



Emergency and Medical Contacts

- Marc D'Silva, Regional Director, marc.dsilva@crs.org, + 410-625-2220
- Andrew Perkins, Safety and Security Advisor, andrew.perkins@crs.org,
- Katherine Price, Country Representative, katherine.price@crs.org, +977-980-655-4554
- Aude Bertrand, Head of Programming, aude.bertrand@crs.org +977 980-209-7625
- Mehul Savla, ReCoVER Program Director, mehul.savla@crs.org, +977-982-971-7654
- Ashim Thapa, Head of Operations, ashim.thapa@crs.org, +977 985-118-3077

All Visitors are covered by CRS International SOS, which provides medical and travel security assistance. CRS will facilitate any support. Still, for your information only, sharing:

- CRS Membership number is 1MMS1062.
- Contact number is +91-22-42838383.



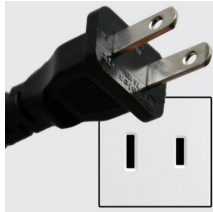



Hospital	Phone	Address	Website
Grande International Hospital	1-5159266	Grande International Hospital, Tokha Rd, Kathmandu 44600	grandehospital.com
Norvic Hospital	1-5970032	Norvic International Hospital, Kathmandu 44617	norvichospital.com
Nepal MEDICITI	1-4217766	Nakhkhu Ukalo Road, Nakhkhu Patan, Karyabinayak 44600	nepalmediciti.com
CIWEC Hospital	1-4424111	Kapurdhara Marg, Kathmandu 44600	ciwechospital.com/
CIWEC Hospital (Pokhara)	61-453082	14th Street, Pokhara 33700	ciwechospital.com/service-location/pokhara/

Pre-Arrival Checklists

All travel logistics have been shared with Nepal Booking (Nepal_Booking@crs.org):

- Passports must be valid for at least six months
- CRS has registered your travel on CRS Global Employee Locator by forwarding itineraries here: CRSTravel@itinerary.internationalsos.com
- Register with your embassy. US Citizens: <https://travelregistration.state.gov/ibrs/ui/index.aspx>
- CRS has registered medical/travel assistance through international SoS. You can access information here: <https://www.internationalsos.com/MasterPortal/>
- Consult a travel doctor on travel to the mid-hill country in Nepal (aka not the Terai and malaria). You can further access information directly at the **Center for Disease Control**: http://wwwnc.cdc.gov/travel/destinations/traveler/mission_disaster/nepal
- **COVID-19 full dose vaccination is required.**
- **Packing list:**
 - Please don't pack anything with "Catholic Relief Services" printed on it.
 - Gifts, chocolates/sweets or any tourist items from the United States will always be appreciated but are not expected. Please avoid bringing anything with "Catholic Relief Services" printed on it.
 - Sun protection, including a hat and sunscreen. (*The mountain sun is strong, with an average of 9 UV index*).
 - Comfortable walking shoes (*running shoes and/or hiking boots, or whatever is most comfortable for you*).
 - Light rain shell/jacket and waterproof shoes/boots (*we are experiencing a late monsoon season*).
 - Clothes that don't show shoulders and knees.

- Breathable clothes (*it can feel like 85-90+ degrees with humidity*).
- Light jacket for the evening (*we will hope the season changes to fall while you are here*).
- Mosquito spray and a plan to keep yourself covered (*there are increased cases of dengue in Kathmandu valley this year*).
- Kathmandu office/event clothing (*no formal wear/blazer is needed*).
- Car sickness medicine if needed (*roads are bumpy and windy*).
- If you have a phone that accepts SIM cards, we will have cards with telephone/data credit readily available upon request.
- Voltage Range: 220 V-2240 (*types of plugs are listed below, starting from most commonly used*).

	<p>1: Type D Pin</p> <p>3 pins Grounded Power Voltage: 220 – 240 V</p>		<p>5: Type C Pin</p> <p>2 pins Not Grounded Power Voltage: 220 – 240 V</p>
	<p>2. Type F Pin</p> <p>2 pins Grounded Power Voltage: 220 – 240 V</p>		<p>6: Type A Pin</p> <p>2 pins Not Grounded Power Voltage: 100 – 127 V</p>
	<p>3. Type B Pin</p> <p>3 Pins Grounded Power Voltage: 100 – 127 V</p>	 <p>In addition, bringing one universal travel adaptor is helpful.</p>	
	<p>4. Type G Pin</p> <p>3 pins Grounded Power Voltage: 220 – 240 V</p>		

Airport Arrival

- You will be asked to show your **COVID-19 vaccine card** – showing two full doses—immediately upon arrival before you go to immigration. (<https://covid19.moph.gov.qa/EN/travel-and-return-policy/Pages/default.aspx>)
- **Visa upon arrival:** A 15-day multi-entry is \$30, and a 30-day multi-entry is \$50. It is helpful to bring U.S. dollars in cash in case credit card machines are down. (<https://www.immigration.gov.np/>)
- After immigration you will go through security again, used for metal detection to ensure everyone pays tax for gold coming from the middle east.
- Baggage claim can take up to 1 hour. **Please keep track of your baggage claim ticket.** They will ask for it as you leave.
- Continue straight down the curved hallway, which is on a declining slope, so please watch for your bags falling off the trolley. Go downstairs by elevator and out of the doors where you will see crowds of hotel/tour groups with signs.
- **Hotel Himalaya will pick you up.** They will have a sign with your name on it. CRS has used this same hotel for two large events with 30 to 50 people and all airport drop-off/pick-up has been on time without any complaint.
- Airport to hotel is three miles and can take 10 to 45 minutes depending on traffic.
- If there are any issues, you can ask anyone to **call Roshan, Operations Coordinator (+977-9849845093) or Katherine Price (+977-9806554554).**

Arrival Package from CRS Nepal

An arrival package will be shared with you during your hotel check-in. This will include the following:

- **Items for EACH ROOM to return to CRS in Nepal after your visit, please:**
 1. **Power strip** for each room.
- **Items for EACH PERSON to use during your visit and keep after your visit, please:**
 1. **Rapid COVID-19 test.** Please take this on the Sunday/Monday before starting the week to keep everyone safe, especially the communities we serve, which may not be vaccinated and have limited access to health care.
 2. **CRS saddle bag** to keep your belongings together.
 3. **CRS water bottle** with your name on it. You can refill from bottled water available in CRS/HRRP offices and in each car during your visit.
 4. **CRS t-shirt** to wear during the trip or to wear when you get home.
 5. **Sunscreen**, which will also be available in each car within the vehicle kit throughout the week.
 6. **Hand sanitizer**, which will also be available in each car within the vehicle kit throughout the week.
 7. **Mosquito spray**, which will also be available in each car within the vehicle kit throughout the week.
 8. **Packet of masks**, which will also be available in each car within the vehicle kit throughout the week.
 9. **Notebook and pen**, should you need them this week.

10. **Non-fiction book about Nepal:** Either *Kathmandu* by Thomas Bell or *Forget Kathmandu* by Manjushree Thapa. Please feel free to swap among yourselves per your interest.
11. **Fiction about Nepal:** Either *Royal Ghosts* by Samrat Upadhyay, *Arresting God in Kathmandu* by Samrat Upadhyay, *Palpasa Café* by Narayan Wagle or *Sold* by Patricia McCormick. Please feel free to swap among yourselves per your interest.
12. **Famous Lapsi candy** from Nepal for a snack when you need one.
13. **Famous Mustang dried apples** from Nepal for a healthy snack when you need one.
14. **ASIA Shelter Forum bags** to have a smaller bag to carry items in the car **and** during your field visits, which will have less CRS/ReCoVER visibility appropriate for the election code of conduct.
15. **Key chain** in a traditional style.
16. **Prayer flags.** It is the belief that any prayers made will be blown upwards as offering to their deities and will bring fortune, happiness and good health to all who hang them, as well as to their families, loved ones, neighbors and all the people throughout the world, even any enemies that you may have.

Overview of Nepal

Country Information

Nepal is a landlocked country bordering India and China, of approximately 57,000 square miles and with a population of roughly 30 million people.



- **Capital:** Kathmandu is the country's capital, with a population of approximately 3 million in Metro Kathmandu.
- **Pokhara:** Pokhara is a city on Phewa Lake, in central Nepal. It is known as a gateway to the Annapurna Circuit, a popular trail in the Himalayas. Tal Barahi Temple, a 2-story pagoda, sits on an island in the lake. On the eastern shore, the Lakeside district has yoga centers and restaurants. In the southern part of the city, the International Mountain Museum has exhibits on the history of mountaineering and the people of the Himalayas.
- **Government:** After abolishing the monarchy, the country was declared the Federal Democratic Republic of Nepal in 2008. In May 2022, Nepal had its second local-level election, and the next general election is scheduled for November 2022. At present, the government is led by the Communist Party of Nepal with Sher Bahadur Deuba serving as the current prime minister.
- **Currency:** The Nepalese rupee (NPR) is currently valued at approximately NPR ₹130 to US \$1.
- **Time Zone:** Nepal Standard Time (UTC+5:45) does not observe Daylight Savings Time.
- **Climate:** During the day, the weather in Nepal is warm (25°C/75°F) and evenings and early mornings are cold (13°C/55°F). Light woolens are recommended. Occasional rain and thundershowers can be expected there almost every day.
- **Food:** Most Nepalese food comes in varying degrees of spiciness. The traditional Nepali Thali, or platter, includes rice, lentils, cauliflower and pickles. Very little beef is available or consumed, but chicken and buffalo are widely available. Vegetarians have many food options.
- **Banking:** ATMs withdrawal limit is ₹100,000 NPR (about \$760) a day with ₹25,000 NPR at a time.
- **Credit Cards:** Credit cards are accepted at major outlets, but not always at smaller shops.
- **Saturdays:** Most shops are closed or have limited hours on this day.
- **Getting Around in Kathmandu:** CRS uses CRS-owned and rented vehicles. Taxis are also widely available. The Pathao mobile app is similar to Uber and is becoming more common to use. Please seek CRS logistics help upon arrival. Drivers are likely to have limited English, so please have the phone number of the destination available when you travel. The CRS team is always just a phone call away if you need assistance. Always wear your seatbelt.
- **Travel to Pokhara:** Kathmandu is one of the busiest one-runway airports in the world. Rain or fog can commonly delay domestic flights in and out of Kathmandu and Pokhara airports. Pokhara airport requires a minimum of 1,000 feet visibility for take-off/landing.

- **Travel Around the Country:** Allow extra time for incidental delays, which may include mud slides, traffic jams and flooding.

Safety and Security

Security Precautions: Nepal is considered a very safe country under United Nations security level 1. There will be an in-country orientation upon arrival to provide a thorough overview of precautions to be taken. Travelers should be careful of pickpockets in crowded market areas and transportation hubs. Packages, mobile phones and luggage should never be left unattended, especially in vehicles/taxis. Travelers should also be cautious of individuals who persistently offer unsolicited help. Avoid any public demonstrations as they can quickly escalate. Women enjoy the same rights and privileges as men.

COVID-19: From January 3, 2020, to October 3, 2022, there have been 999,789 confirmed cases of COVID-19 with 12,018 deaths, reported to the world Health Organization. As of September 24, 2022, a total of 57,909,436 vaccine doses have been administered. **The Government of Nepal still requires masks by law.** All CRS and partner staff are vaccinated, while 40% of the population is vaccinated.

General Strikes: Bandhs, or general strikes, forcing closure of businesses and schools, and halting of vehicular traffic, occur frequently and are used as a form of political agitation. Bandhs can be unpredictable and may include violent incidents. In past years, bandhs have lasted for periods from a few hours to several days or weeks, causing shortages of daily food supplies and bringing traffic to a halt. Individuals who do not comply with a bandh may be harassed. Bandhs in trekking areas are infrequent but do occur from time to time. Although bandh activity generally is not directed at foreign travelers, tourists defying bandhs may be subject to intimidation or violence. Most bandhs are related to politics, as Nepal has a track record of instability among the governing political parties.

Road Accidents: In Nepal, vehicles are driven on the left-hand side of the road. Road travel in areas outside the Kathmandu Valley remains dangerous. In general, roads are in poor condition and lack basic safety features, resulting in significant numbers of accidents and fatalities. Deaths from motorcycle accidents have risen dramatically in recent years. Long-distance buses often drive recklessly and bus accidents involving multiple fatalities are not uncommon. Traffic includes buses, mini-vans, cars, bicycles and motorcycles. Some stretches of eastern and western highways connecting to Kathmandu valley have wider roads, leading to higher traffic speeds and more road accidents. The speed limit in towns and cities is between 20-40 km/h (12-25 mph) and on highways is between 40-60 km/h (25-37 mph).

Natural Disasters, Earthquakes: According to the U.S. Geological Survey, “Seismicity in the Himalayas dominantly results from the continental collision of the India and Eurasia plates, which are converging at a relative rate of 40-50 mm/year. Northward under thrusting of India beneath Eurasia generates numerous earthquakes and consequently makes this area one of the most seismically hazardous regions on Earth.” More information on the potential for earthquakes in Nepal can be found on their website, earthquake.usgs.gov/earthquakes/eventpage/us2000292y/executive#region-info. Two mega earthquakes struck on April 25 and May 12, 2015, followed by hundreds of aftershocks in Nepal. Earthquakes also struck in the Lamjung district in June 2021, which is a CRS project area. CRS has been implementing a recovery and reconstruction program actively in Nepal since 2015.

Natural Disasters, Landslides and Floods: Landslides and floods are rampant in the monsoon season, May through September. Thousands of people are temporarily displaced every year due to floods and landslides.

More than 300 people were killed by landslides, floods and lightning each year during the monsoon seasons of 2020 and 2021.

Food allergies in the group: For meals, we have taken into account two food allergies: for Mark Melia no shellfish and for Sarita Hanley, no dairy.

Dengue

Dengue is a mosquito-borne viral illness that causes a wide spectrum of illnesses. This can range from mild to severe symptoms in those infected. While dengue is widespread throughout the tropics, it is now present in all WHO geographic regions and is endemic in over 100 countries. Climate, social and environmental factors also impact risk of infection and severity of illness. Currently, estimates suggest that there are over 390 million dengue virus infections annually. Kathmandu has seen a resurgence of dengue, with the first cases reported in May and June 2022. As of September 2022, Nepal has recorded over 17,500 infections and 21 dengue-related deaths. There have been 11 infections among CRS staff. While cases typically peak in areas with hot climate and standing water, in Nepal most cases are reported in Kathmandu valley—although dengue cases have now been reported across Nepal.

Dengue Prevention

Primary prevention focuses on awareness of risk, eliminating mosquitos, and avoiding mosquito bites.

Secondary prevention includes use of [Dengvaxia](#), an FDA approved vaccine available to some populations in limited countries. Mosquito bite prevention methods include:

- Empty and scrub (or treat) any mosquito breeding grounds such as any objects that hold standing water (pots, planters, tubs, tires, trash containers).
- Use registered insect repellents including DEET, Picardin, IR3535, oil of lemon and eucalyptus, para-methane-diol or 2-undecanone.
- Follow manufacturer instructions for repellent application and reapply as directed.
- If using with sunscreen, apply sunscreen first and repellent second.
- Wear long-sleeved shirts and long pants.
- Treat clothing and travel gear with permethrin.
- Stay in dwellings with screens on windows and doors. Use air conditioning if available.

Dengue Resources:

[WHO Dengue Fact Sheet](#)

[CDC Dengue Infection Phases](#)

[CDC Dengue Treatment](#)

[CDC Dengue Vaccine](#)

Election

A second national election will be held on November 20, 2022.

- Travelers should avoid directly or indirectly endorsing, supporting or opposing any candidates for public office or a political party. This applies to all campaigns, including at federal, state and local levels.
- This includes critical comments about the country's politics or the government where CRS works.
- The Election Code of Conduct—if in effect during the visit—will restrict CRS/project visibility, group size and meeting with government representatives.

Cultural and Contextual Awareness

- Namaste is the universal greeting. Namaskar is used when you want to indicate respect to a higher authority (i.e. government).
- Appreciate and recognize the local staff's significant amount of experience and capacity.
- Seek input from local staff and partners.
- Recognize the efforts of the government and remember to involve them in project design and implementation.
- Take time with the staff for non-work relaxation, even if just for a couple of minutes at the end of the day.
- When paying for something, always use your RIGHT HAND, as the left hand is considered unclean.
- Maintain awareness of your surroundings and your belongings. Never leave bags unattended. Consider carrying just the essentials with you into the field.
- People do not wear shoes inside so wear shoes that are easy to take on and off (sandals and a pair of closed shoes if you are going into the field).
- Please avoid showing your shoulders and knees.
- CRS staff should avoid discussions of the political, religious, and/or the military situation in the country when in public places, on the phone or in the presence of strangers.

Overview of Nepal Country Program

Office Presence

- CRS Country Office is in Kathmandu Valley.
- NHSRP Country Office is in Kathmandu Valley.
- CRS Field Office is in Lamjung.
- CRS Field Office is in Makwanpur.
- CRS Field Office is in Tanahun.
- CRS Field Office is in Palpa.

Staff Numbers

- CRS Staff: 80+
- Partner Staff: 100+

Partners: NGO, Private, Research, and Government Partners

- 2 national government partners: National Disaster Risk Reduction and Management Authority (NDRRMA) and Social Welfare Council (SWC) which reviews and approves all projects
- 4 provincial governments.
- Many local governments at the municipal and ward-levels, which reviews and approves all projects.
- 1 national Catholic organization: Caritas Nepal.
- 3 national organizations: National Society for Earthquake Technology (NSET), SAPPROS and Lumanti.
- 3 local partners: RCDC, SSICDC and SSJASK.
- 1 private organization: Agro-Enterprise Center–Federation of Nepalese Chambers of Commerce and Industry (FNCCI).
- 1 education institution: Institute of Engineering (IoE).
- 1 research institution: Institute of Agriculture and Animal Sciences (IIAS).

External Donors

- Foreign, Commonwealth and Development Office (FCDO).
- Charitable Giving private donor funding.
- U.S. Agency for International Development.
- Caritas Australia.
- CRS funding.

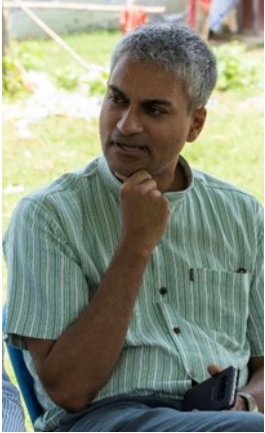
Budget

- FY 2022 budget: \$5.5 million.

CRS in Nepal

Staff Bios

Marc D'Silva, Asia Regional Director



Marc D'Silva has served as regional director for the CRS Asia region since April 2018, overseeing 600 CRS staff across 12 offices in 10 countries. In this role, he supports country teams with development and emergency programming in Indonesia, the Philippines, Bangladesh and Nepal. He also helps country teams reflect on how CRS can more effectively build local capacities and influence governments to better assist vulnerable and marginalized communities.

Marc served as CRS' representative for Europe from 2012 to 2017, where he was responsible for overseeing programming in the areas of housing, emergency response, peacebuilding, livelihoods, legal aid and counter-trafficking in Bosnia and Herzegovina, Serbia, Greece, Macedonia, Albania, Ukraine and other countries in Eastern Europe and Central Asia. Prior to this, he worked in CRS' Foundation and Corporate Engagement unit, where he developed partnerships across the corporate and foundation sector.

From 2002 to 2006, Marc served as the CRS country representative for India, and as the senior program manager for CRS' country programs in Ethiopia from 1999 to 2002, and Sierra Leone from 1997 to 1999. Before joining CRS, Marc served as regional program manager for the International Rescue Committee in Guinea, and a Peace Corps volunteer in Sierra Leone. He graduated from Duke University in 1993 with a bachelor's degree in history and political science. He lives in Phnom Penh, Cambodia, with his wife Chinar and their two daughters.

Katherine Price, Nepal Country Representative

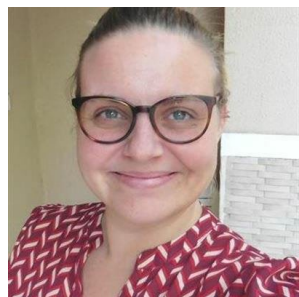


Katherine Price has been working with CRS Nepal through local partners and governments since 2016, supporting the recovery of earthquake-affected families. In January 2018, she assumed the position of country representative overseeing up to 100 CRS staff.

Katherine served as head of programming in Nepal and the Central African Republic from 2014 to 2017. From 2012 to 2014, she served as a CRS program manager overseeing U.S. government-funded emergency programs in the Democratic Republic of the Congo and Chad. Since joining CRS, Katherine has successfully supported the start and implementation of more than 20 programs—all in complex, dynamic and remote operational environments.

Before joining CRS, Katherine was a Fulbright scholar in Nepal; a Fulbright fellow and consultant with the United Nations Educational, Scientific and Cultural Organization in France; and a consultant for Eduventures, an education research and consulting company in Boston, Massachusetts.

Aude Bertrand, Nepal Head of Programming



Based in Kathmandu, Aude oversees a team of talented professionals dedicated to advance CRS' mission of building resilience of vulnerable families across Nepal. Aude joined CRS in 2014 as Emergency Program Manager in Central Africa Republic. In the seven years that followed, she managed emergency and recovery programs in complex settings, serving as Emergency Coordinator in Gaza, northeast Nigeria and northern Ethiopia. Always looking for new challenges and impactful ways of working, Aude joined CRS in Nepal to support its work on localization, capacity building and meaningful system change.

Aude holds a master's degree in Political Sciences, with a specialization in International Humanitarian Action (NOHA program) from the University Catholic of Louvain, Belgium. When not working, she loves to read, travel the world, and spend time with her lovely nieces back home in Belgium.

Mehul Savla, Nepal Senior Program Manager



Mehul is an Indian Architect from Mumbai with more than 20 years of progressive work experience in project management, shelter and settlement, multi-sectoral programming, consortium management, and partnership management in Sri Lanka, Myanmar (Burma), Iran, the Philippines, Bangladesh and India. Mehul serves as a ReCoVER Project Director and Asia Focal Point for Homes and Communities.

A recipient of the CRS Project Management Award 2020 and CRS Special Recognition Award 2021 in the "Bringing Out the Best" category, he is also a trained roster member of Global Shelter Cluster and RedR India to provide leadership in the Emergency and Shelter and Settlement sector. He has served in a leadership role as a Director for Program Management and Quality assurance for a USAID-funded multisectoral program post-conflict project in Chittagong Hill Tracts of Bangladesh. His experience doesn't limit him to working on strategy development, partnership, partner/consortium management, influence and scaling. He is passionate about localization, local leadership, local building culture and has served as a Country Manager in Sri Lanka and Myanmar in a complex context.

CRS Success to date

CRS has supported emergency programming in Nepal since 1970 through Caritas Nepal. CRS' physical presence in Nepal began with the emergency response after the devastating earthquakes in 2015.

In 2015, in the aftermath of the two earthquakes that impacted an estimated 8 million people and damaged or destroyed nearly 900,000 homes, CRS with the support of its local partner Caritas Nepal and numerous donors, provided immediate emergency response and relief to families in Gorkha district, the epicenter of the first and most catastrophic earthquake. On the invitation of Caritas Nepal, CRS established a new country program and set a vision to support the national reconstruction effort by committing significant emergency response and recovery surge support and financial resources.

In 2021, CRS expanded its earthquake recovery and resilience programming through its ReCoVER program to support the most vulnerable households yet to be reached with housing, livelihoods, and water, sanitation and hygiene assistance by humanitarian actors. With the aim of reaching 4,000 families by 2023, ReCoVER is

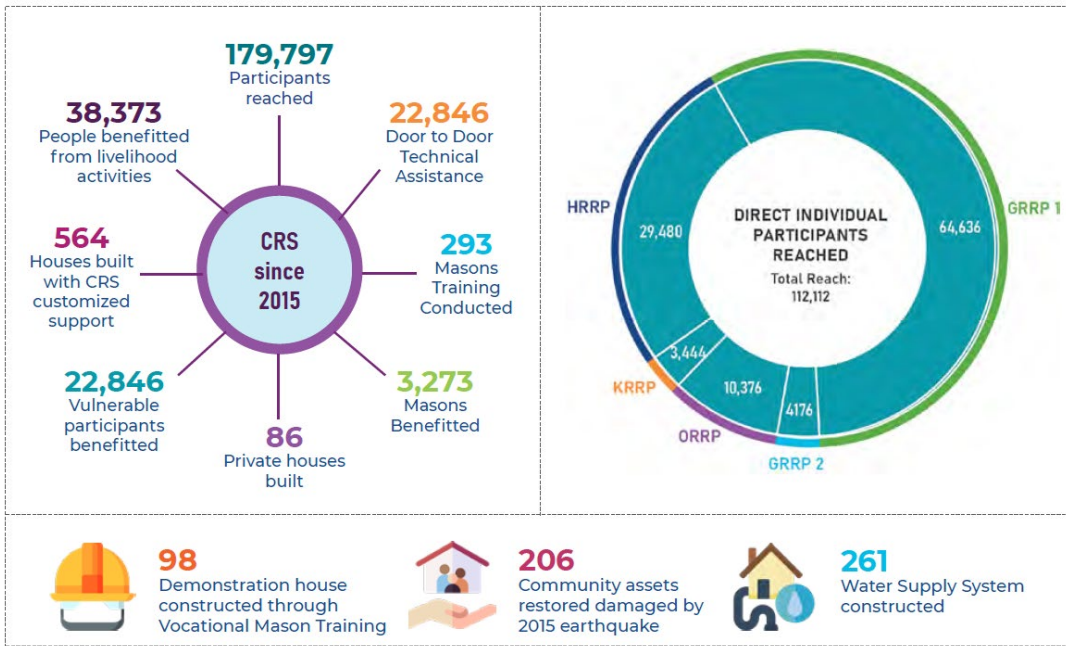
the last running 2015 earthquake recovery program in Nepal supported by international actors, with Nepal's government having shifted its focus and assistance toward more recent disasters.

In the seven years since the disaster, CRS has become a key stakeholder in the national reconstruction effort, supporting the Nepalese government in setting reconstruction standards through the Housing Recovery and Reconstruction Platform, recently renamed the National Housing and Settlements Resilience Platform. NHRP was established to support the National Reconstruction Authority, Ministry of Urban Development and Ministry of Federal Affairs and Local Development, Central Level Program Implementation Units, other relevant government authorities, and partner organizations with coordination of the post-earthquake housing reconstruction. The platform, led by CRS since 2017, is now evolving to support resilient housing coordination for any types of disaster, including flooding, landslides and fires.

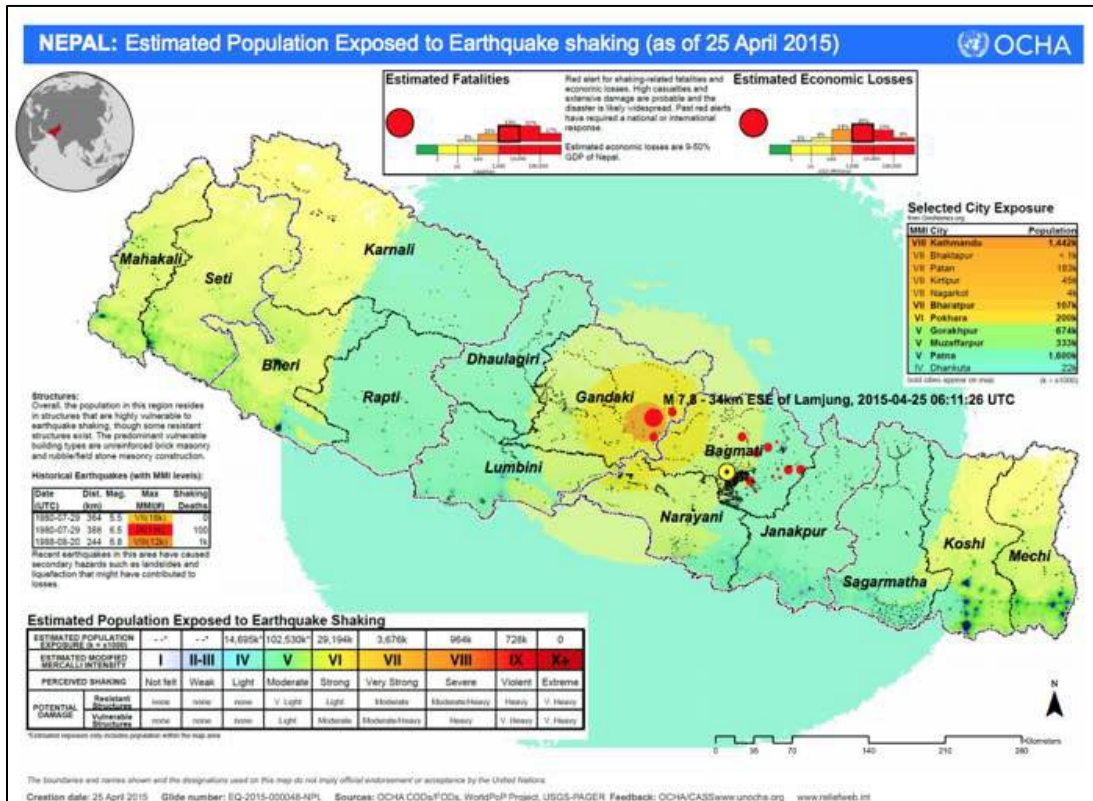
CRS' vision for Nepal is for all people to survive and thrive in the face of disaster and achieve dignified and resilient livelihoods in sustainable landscapes. The country program aspires to accelerate social equity and inclusion and the localization of leadership in Nepal through its signature areas—Homes and Communities, Localization, Agriculture Production, Emergency Response and Disaster Risk Reduction—working closely with all tiers of government to create system-level change.

CRS in Nepal is currently implementing emergency response and recovery projects, including a COVID-19 response in three provinces of the country, with a portfolio that includes funding from private donors, the U.S. Agency for International Development, the U.K. Foreign, Commonwealth & Development Office, and Caritas network.

Highlight of CRS in Nepal: Impact in Numbers



Map of Nepal 2015 Earthquake



Current Projects in Nepal

Resilient Communities through Vulnerable Earthquake Recovery January 2021–December 2023

- Supporting 6,240 families affected by the 2015 earthquake.
- Assisting 4,000 households in earthquake-affected districts of Nepal to build back safer homes and restore critical water supply for the most vulnerable families who have been unable to recover.
- Supporting households to improve financial planning, home-based livelihoods and savings that help families withstand future shocks.
- Supporting 31,200 individuals to survive and thrive in their homes and communities.
- ReCoVER: 2-Page (Annex 2)
- ReCoVER: Sectors; Shelter, Livelihoods, WASH 1 pager (Annex 3,4,5)
- ReCoVER: Field Visit Profile Summary (Annex 6)

Homes and Communities January 2020–September 2023

- Championing the vision of Strategic Change Platform 2, Building Safe and Dignified Homes and Communities.
- Supporting urban recovery process in close coordination with the National Reconstruction Authority.
- Supporting two municipalities, Arughat of the Gorkha district and Besisahar of the Lamjung district. Conducting assessments of housing programs, preparing housing strategic action plan and strengthening the capacity of the municipalities for housing and settlement resilience.
- Supporting Bagmati province, conducting an assessment on the performance of the Janata Awas project and revising the Janata Awas Guidelines.
- Developing a curriculum at the Institute of Engineering, integrating all the data and experiences of the earthquake recovery and reconstruction in close coordination with the National Risk Reduction and Management Authority.
- Developing and piloting a Homeowners Construction Guidebook and aiming for an endorsement by the Ministry of Urban Development and the National Disaster Risk Reduction and Management Authority.

Lamjung Recovery Project January 2021–December 2023

- Providing low-cost housing support to 50 of the most vulnerable families.
- Delivering agricultural livelihoods support to households.
- Supporting two communities with irrigation infrastructure and water, sanitation and hygiene.
- Supporting four municipalities with disaster management plans and strategic frameworks to enhance their skills in disaster preparedness and response.
- Improving household livelihoods through animal husbandry and goat shelter reconstruction.
- Strengthening agricultural productivity through improved drought resistance seeds and off-season horticulture.

COVID-19 Emergency Response and Recovery Project 2020–2022

- Performing adaptive research with scientists, farmers, and district research stations to improve productivity among small-scale farmers living in flood and drought-prone areas.
- Assisting households and agri-businesses in Gorkha and Palpa districts to increase their incomes to recover from the economic impacts of COVID-19.
- Improving household livelihoods through animal husbandry and goat shelter reconstruction.
- Piloting cardamom and ginger cultivation with small-to-medium scale farmers
- Supporting migrant returnees in the Tansen municipality with information the Nepalese government has designed for COVID-19.
- Ensuring vulnerable households have access to safe housing techniques.
- Supporting livelihood, shelter and disaster risk reduction activities in three municipalities—Tansen, Bagnaskali and Ribdikot—of the Palpa district and two municipalities—Arughat and Bhimsenthapa—of the Gorkha district.
- Delivering agricultural livelihood support to 600 returned migrant workers in the districts of Palpa and Gorkha.
- Constructing a community health center in Palpa.
- Providing support to 130 micro-entrepreneurs for agri-businesses.
- Assisting with the construction of a warehouse for the storage of ginger grown by communities.

Farmers to Farmer July 2018–June 2023

- Providing host organizations with technical support as requested, with two to three U.S. farmer volunteers each month.
- Delivering value-chain development and support aligned with the Nepalese government's priorities.
- Integrating large-scale USAID-funded livelihood projects in Nepal, implemented in provinces 1, 5, 6, and 7.

Housing Recovery and Reconstruction Platforms 3 and 4 March 2017–August 2021

- Provided on-the-ground technical, general and information management support to the 14 most-affected districts, looking to expand reach to 32 affected districts.
- Led shelter coordination platform between donors, the Government of Nepal, and partner organizations.
- Embedded a team of 20-70 staff members within government offices to support the National Reconstruction Authority (NRA) with hands-on technical, general, and information management support to 282 local governments in 32 affected districts until December 2021.
- Contributed to the development of 11 Nepalese government policies and guidelines impacting national and local governments, donors, and more than 100 NGOs to serve more than 886,000 earthquake-affected families, totaling 4.8 million people.
- Supported the National Disaster Risk Management Agency NDRRMA to institutionalize relevant learning and expertise from the reconstruction experiences to benefit long-term resilience.

EMPOWER Asia–Nepal program Aug 2022- Sep 2024

Partnering with the National Disaster Risk Reduction and Management Agency* for capacity strengthening in four key areas: Gender Equality and Social Inclusion; Monitoring, Evaluation, Accountability and Learning; Feedback, Complaints and Responses Mechanism; and networking.

*Note The NDRRMA is Nepal government's leading agency for disaster risk reduction and management, emergency response and housing initiatives related to disasters, particularly those related to floods, landslides and fire-induced disasters

Visitor Profiles

Most Reverend Octavio Cisneros, Auxiliary Bishop Emeritus of Brooklyn



Bishop Octavio Cisneros was born in Las Villas, a province of Cuba. In 1961, while still in high school, he came to the United States as a political refugee through Operation Peter Pan, a Catholic humanitarian effort that brought 14,000 unaccompanied minors to the United States from Cuba.

He received his bachelor's degree from Niagara University in New York, before completing his theological studies at the Seminary of the Immaculate Conception. He was ordained to the priesthood for the Diocese of Brooklyn in 1971, where he served in pastoral roles and was diocesan coordinator of the Hispanic Apostolate. He also served as Episcopal Vicar of Brooklyn and Rector of Cathedral Seminary residence in Douglaston, New York.

Bishop Cisneros was ordained titular Bishop of Eanach Dúin in Ireland and Auxiliary Bishop of Brooklyn in 2006, and he served in that capacity until his retirement in 2020. His activities have included associations with the Northeast Catholic Center for Hispanics, the Instituto Nacional Hispano de Liturgia, the Board of Governors of Immaculate Conception Seminary, the Pastors' Advisory Committee and the Conference of Diocesan Directors for the Spanish Apostolate, which he served as president.

At the United States Conference of Catholic Bishops, Bishop Cisneros chairs the Subcommittee for the Church in Latin America, serves on the National Collections Committee, and is past Chair of the Subcommittee on Divine Worship in Spanish. He is the Vice-Postulator of the Cause for Canonization of the Servant of God Felix Varela, a Cuban priest who served in New York for almost 30 years, ministering to Irish immigrants in the early part of the 19th century. The bishop is a founding member and president of the Felix Varela Foundation. Bishop Cisneros was elected to the CRS Board of Directors in 2020.

Gerry Carolan, Vice Chair of the CRS Board of Directors, Peachtree City, Georgia



Gerry is the retired Vice President and Deputy General Counsel for Labor, Employment and Benefits at The Coca-Cola Company. She previously served as the Vice President of Labor Relations at Delta Air Lines where she spent most of her career. She earned her law degree from Seattle University in 1984. Gerry is currently a pro bono immigration attorney in Atlanta, Georgia, where she assists clients in obtaining immigration benefits, provides Know Your Rights seminars to local churches and serves as a volunteer attorney at several immigration detention centers in the United States.

Gerry is an active parishioner at Holy Trinity Parish in Peachtree City, Georgia. She and her family hosted a family of 11 refugees from Kosovo in 1999 and Gerry has continued to assist in refugee resettlement since then. She has led Holy Trinity's CRS Helping Hands food packing effort for the last eight years. Her parish has donated more than 500,000 meals and raised over \$350,000 to finance that effort. She began service on the CRS Foundation Board of Directors in 2014 and was elected to the CRS Board of Directors in 2018. She has served as Vice Chair of the Board since 2020 and has traveled extensively to witness CRS' lifesaving and life-changing work. Gerry and her husband, Barry Tolbert, have three children and one grandchild.

John S. Scheid, CEO, Scheid Investment Group LLC, Milwaukee, Wisconsin



A private investor with both equity interests and subordinated debt financings across several business enterprises, John is CEO of Scheid Investment Group LLC. He earned a bachelor's degree in Business Administration, Accounting and Business/Management from the University of Notre Dame in Indiana. He has been certified as a Director in Corporate Governance by the University of California, Los Angeles, Anderson Graduate School of Management and is a Board Leadership Fellow of the National Association of Corporate Directors. He also holds a Certificate in Cybersecurity Oversight from Carnegie Mellon University.

Today, John is a Director of Selective Insurance Group, of Extraordinary Re Holdings LTD, Extraordinary RE Bermuda, Groupware Technologies LLC, and a Director and Audit Committee Chair of Catholic Relief Services. He also serves as past Chair of the Board and a former Director of Messmer Catholic Schools in Milwaukee, as Vice Chair of the Finance Council for the Archdiocese of Milwaukee, an Emeritus Director of the University of Wisconsin-Milwaukee Foundation, a member of the Golden Angels Investment Group LLC, and on the Investment Committee of the Marquette University High School Foundation. John was previously on the Board of Governors and served as the Audit Committee Chair of Junior Achievement Worldwide and was Chair of the Wisconsin Accounting Examining Board. He was elected to the CRS Board of Directors in 2020. John and his wife Deb live in Milwaukee and have three grown children.

Deb Scheid, Milwaukee, Wisconsin



Deb lives in Milwaukee, Wisconsin. She and her husband, John, are the parents of Monica, Anne and Paul. Deb graduated from the University of Notre Dame in Indiana and Marquette University Law School in Milwaukee.

Early in her career, she was in private practice and followed that with a position on the faculty of Marquette University Law School. For the last 15 years she has provided pro bono representation, primarily in eviction and unemployment matters, through Legal Action of Wisconsin's Volunteer Lawyer Project. Deb currently works with the Afghan Asylum Project to provide representation to individuals evacuated from Afghanistan in August 2021 in their applications for asylum in the United States.

Over the years Deb has been involved in numerous parish ministries. She enjoys reading and being outdoors—especially hiking, biking and enjoying the lakes and landscape of northern Wisconsin and other places.

Sarita Hanley, Building One Community, Stamford, Connecticut



Sarita is a founding member of Building One Community, the only immigrant center in Fairfield County, Connecticut. Since its inception in 2008, she has organized fundraising events for this center. For the last 6 1/2 years, Sarita has been a member of the CRS Foundation Board, as well as a member of its Nominating Committee and Steering Committee. In Connecticut, Sarita has organized several CRS presentations of various types and sizes. She is a Dame of the Order of Malta and has traveled to Lourdes with the Order on two service trips.

Sarita was born and raised in Puerto Rico, the homeland of her maternal family. For the past 28 years she has lived in Connecticut with her husband, Greg, and they are the proud parents of four adult children. Sarita has a master's degree in Organizational Psychology from New York University, which led her to work organizing business conferences. In Connecticut, she has volunteered with various organizations, including board positions at King School, Building One Community and New Covenant Center, a Catholic organization. She is also involved in advisory committees in the Diocese of Bridgeport.

Sarita's fondest experiences with CRS has been traveling to six countries. Her first eye-opening trip was to Haiti in 2014, which led her to pursue more involvement with CRS. Later, she traveled to Ethiopia, where the focus was on inaugurating water wells in remote villages. This was followed by a trip to Lebanon, where the focus was on Syrian refugee camps and schools for the refugee children. In 2019, Sarita traveled to Iraq, visiting Baghdad, Nineveh and Mosul, and Erbil in Kurdistan. Her last CRS trip was to El Salvador in 2020, where she learned about life-changing agricultural and water programs for local farmers, as well as programs for young people and programs for women's livelihoods after prison terms. She looks forward to more CRS experiences, where she can share time with program participants, as well as with the courageous staff who are dedicated to the critical work of CRS' mission.

Melinda Jenkins, Richmond, Virginia



Melinda lives in Richmond, Virginia with her husband, Darrell. Since retiring from a 33-year career in education in 2013, she has traveled with her husband to many beautiful and interesting places around the world. Most often, her travels have been with her longtime friend and college roommate, Gerry Carolan. When Melinda is not traveling, she enjoys spending time with family and friends.

Melinda has been an active member of St. Martin's Episcopal Church for over 30 years and is a regular volunteer with the local food bank in Richmond, helping to package meals for Meals on Wheels delivery and other local programs.

Melinda and her husband have been blessed with two children, Bennett and Claire, and, more recently, they've welcomed two grandchildren, Caroline and Cameron, who have enriched their lives immensely.

Ron Noecker, Matthew 6:3 Program, Baltimore, Maryland



Ron brings a history of service to his current work as a representative of a private anonymous donor to CRS. He leads the Matthew 6:3 Program team dedicated to this effort.

Through his work in ministry and nursing, and through the founding of a nursing organization in Guatemala, Nursing Heart, Ron's variety of experiences has come together in service of the poorest of the poor in the world. He is delighted to join the members of CRS on this special journey to NEPAL.

Mark Melia, Executive Vice President of Charitable Giving, CRS



In his current role, Mark leads and organizes agency efforts to promote charitable giving to the poor of the world through Catholic Relief Services. He is responsible for all charitable giving activities, which in 2021 generated more than \$199 million. He leads a department of more than 100 people charged with growing net revenue by identifying and supporting efforts that build relationships with current donors and begin relationships with new donors. In partnership with the President & CEO, Sean Callahan, Mark leads all Charitable Giving efforts undertaken by the CRS Board of Directors and the CRS Foundation Board. He also serves as a member of CRS' Executive Leadership Team.

Mark began his career with CRS in 1991, in what was then known as the Church Outreach Department. Later, as Associate Director for Church Outreach, he served as primary liaison between CRS executives and Church leaders in the United States, including cardinals and bishops, and directed outreach activities to the Church network in the United States. After his graduate studies, Mark worked for three years in the assisted living and affordable housing industries. He returned to CRS in 2002 as Assistant to the Deputy Executive Director of Fundraising and Marketing. In 2007, he became the Deputy Vice President of Charitable Giving, directing annual giving, donor services, Hispanic outreach, publications, prospect research and revenue analysis. He assumed his current position in 2012.

Mark has served on the Board of Directors for the National Catholic Development Conference and has also served on the St. Vincent de Paul Society of Baltimore Board of Directors. Mark has master's degrees in both Business Administration and Social Work from the University of Maryland as well as a bachelor's degree from Johns Hopkins University. He lives in Towson, Maryland, with his wife and two children.

Kevin Kostic, Director of Donor Relations, CRS



Based in Baltimore, Kevin leads the nine-member team responsible for advancing leadership gift-level donor cultivation and stewardship. He actively supports the CRS Foundation Board and is on the internal leadership team of CRS' Go FAR fundraising campaign. In addition, he also manages a portfolio of generous private foundations.

Kevin joined CRS in 2004, staffing CRS' programmatic outreach to U.S. colleges and universities. Later, he served as the Strategy and Organizational Development Advisor for two CRS divisions, advancing their monitoring and evaluation and staff development objectives. During this time at CRS, he played a key role in helping to shape CRS' strategic plan and marketing rebrand. Following this post, Kevin served as the Director of Family Foundations and Philanthropy in Charitable Giving.

Kevin holds a bachelor's from James Madison University and a master's in Religious Education from Fordham University. When not working, Kevin is an active playwright, pastoral musician and sports enthusiast. He lives in Baltimore, Maryland, with his wife and two children.

Rebekah Kates Lemke, Deputy Content Director for Multimedia, CRS



Rebekah is the Deputy Content Director for Multimedia for Charitable Giving at Catholic Relief Services. She is based in Baltimore but has traveled to several countries documenting stories of the people CRS serves around the world.

Previously, she served as a Senior Content Strategist, Web Producer, Branded Content Writer and Editor for CRS. Before coming to CRS in 2014, Rebekah worked in television news as a reporter and producer for 15 years.

Rebekah lives in Maryland with her husband and two sons. She enjoys reading, writing, going to the gym and playing board games and sports with her kids.

Ben Mulkey, Multimedia Specialist, CRS



Ben is currently based in Asheville, North Carolina. Before coming to CRS in 2022, Ben worked in broadcast television as a multiple award-winning photojournalist, editor and field producer. He received the David Kaplan Overseas Press Club Award for his work in Israel and Palestine.

Ben lives in beautiful western North Carolina in the heart of the Appalachian Mountains. He enjoys hiking, camping, training in jiu jitsu and exploring the mountains with his dog, Earl.